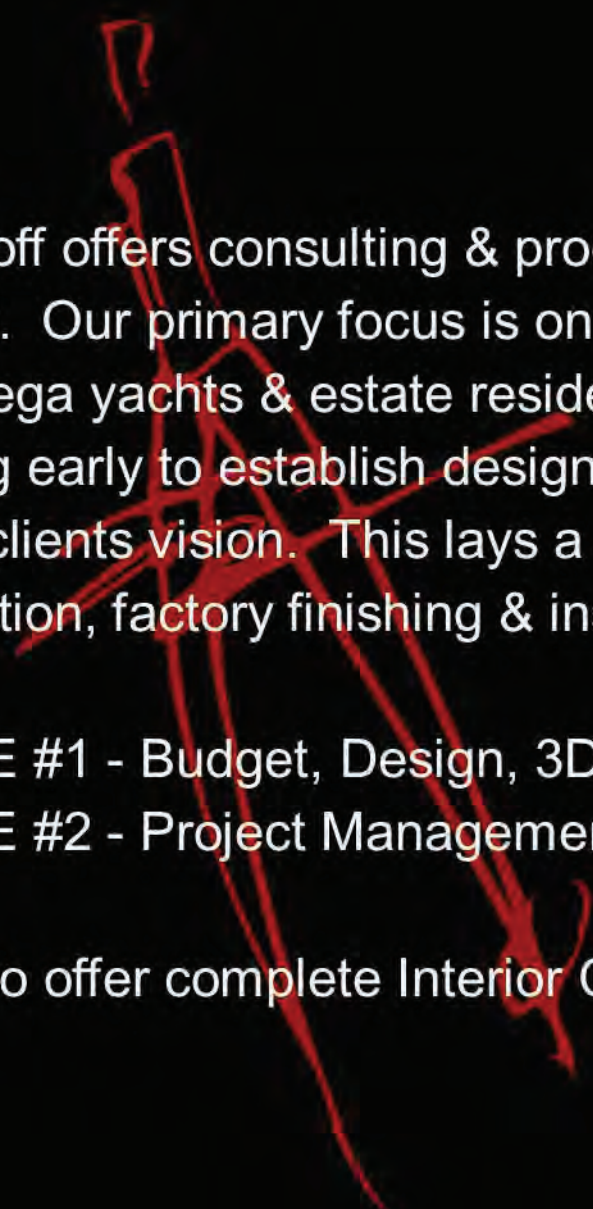




**WESTHOFF INTERIORS**





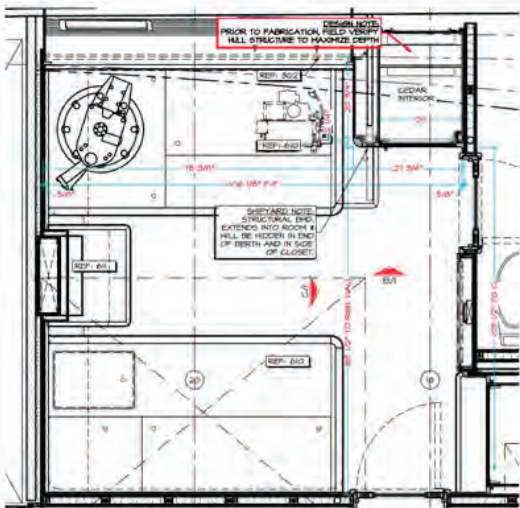
Westhoff offers consulting & production expertise throughout all phases of a project. Our primary focus is on interior woodwork design & fabrication for high-end mega yachts & estate residences. Westhoff feels the key to success is starting early to establish designs and budgets that are achievable and perfectly fit the clients vision. This lays a solid platform for Westhoffs in-house fabrication, factory finishing & installation of the project.

PHASE #1 - Budget, Design, 3D Renderings, 3D Scanning & Shop Drawings.

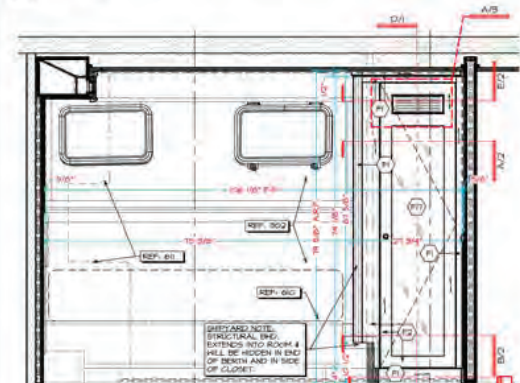
PHASE #2 - Project Management, Fabrication, Factory Finishing & Installation.

We also offer complete Interior Contracting Services.

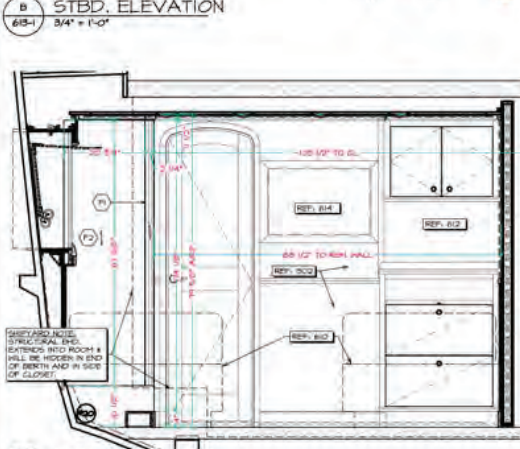




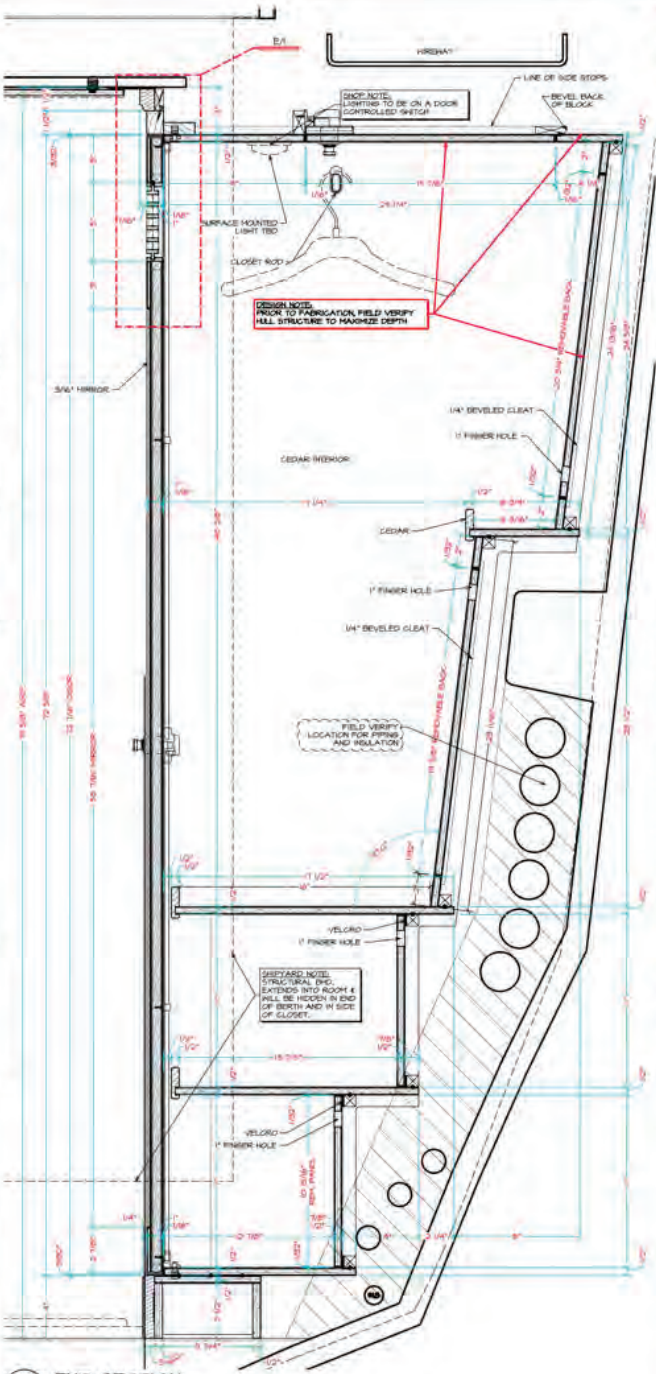
A PLAN VIEW



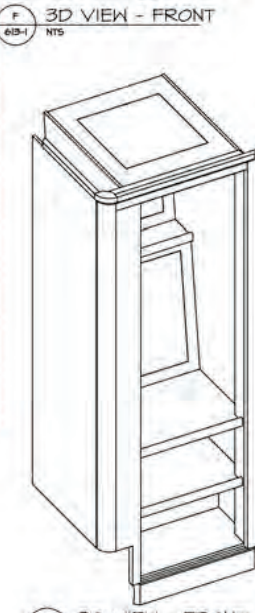
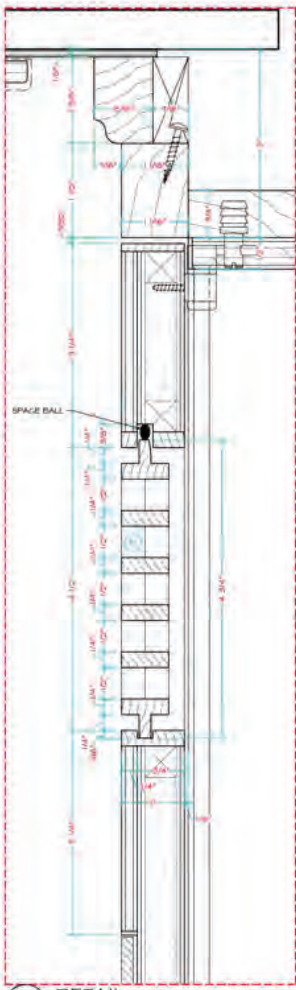
B STBD. ELEVATION



C FWD. ELEVATION



D END SECTION



QUALITY CONTROL SIGN OFF BOX

BUILDER:	DATE:
SOB LEAD:	DATE:
SIGNATURE:	DATE:
SOB LEAD:	DATE:
SIGNATURE:	DATE:
SOB LEAD:	DATE:

DESIGN NOTE: PRIOR TO FABRICATION, FIELD VERIFY HULL STRUCTURE TO MAXIMIZE DEPTH

WESTWIND INTERIORS  
**CUSTOM FABRICATION**  
 14006 WEST 107TH ST.  
 LENEXA, KS 66215  
 PH: (913) 663-9900  
 WWW.WESTWINDINTERIORS.COM

FINISH MATERIALS

- 1 LAMBER (SPT. 201)
- 2 LAMBER (SPT. 201)
- 3 LAMBER (SPT. 201)
- 4 LAMBER (SPT. 201)
- 5 LAMBER (SPT. 201)
- 6 LAMBER (SPT. 201)
- 7 LAMBER (SPT. 201)
- 8 LAMBER (SPT. 201)
- 9 LAMBER (SPT. 201)
- 10 LAMBER (SPT. 201)
- 11 LAMBER (SPT. 201)
- 12 LAMBER (SPT. 201)
- 13 LAMBER (SPT. 201)
- 14 LAMBER (SPT. 201)
- 15 LAMBER (SPT. 201)

HARDWARE

HW	QTY
PAHS	1
LAMP	1
LAMP	1
LAMP	1
DRNR	1
WRDZ	1
BELV	1
GARDN	1
MDC	1

REVISION SCHEDULE

NO.	DATE	MODIFICATION
1		

**NORDLUND**  
 1828 Marina View Drive, Sparks, NV 89422  
 TEL: 775-421-3625 FAX: 775-421-0762

SIGNATURE: \_\_\_\_\_ DATE: \_\_\_\_\_

**FULTON 110'**

ITEMS

NO.	DATE	MODIFICATION
1		

613-1

**FOR CONSTRUCTION**

**AWARD  
WINNER**





**COMPLETED PROJECTS**

































**3D DESIGN RENDERINGS**















**CUSTOM FABRICATION**



633-26  
633-27  
633-28  
633-29  
633-30  
633-31  
633-32  
633-33  
633-34  
633-35  
633-36  
633-37  
633-38  
633-39  
633-40

TOP 633-26 CW	TOP 633-29 CW	TOP 633-32 CW	TOP 633-34 CW	TOP 633-35 CW	TOP 633-38 CW
TOP 633-27 CW	TOP 633-30 CW			TOP 633-36 CW	TOP 633-39 CW
TOP 633-28 CW	TOP 633-31 CW			TOP 633-37 CW	TOP 633-40 CW





AWARD WINNER



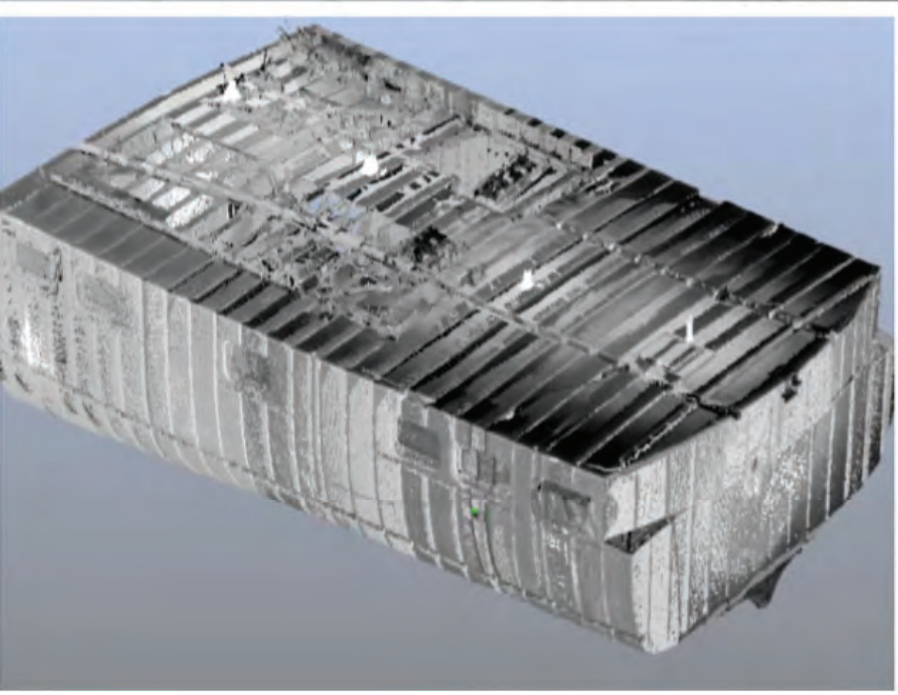
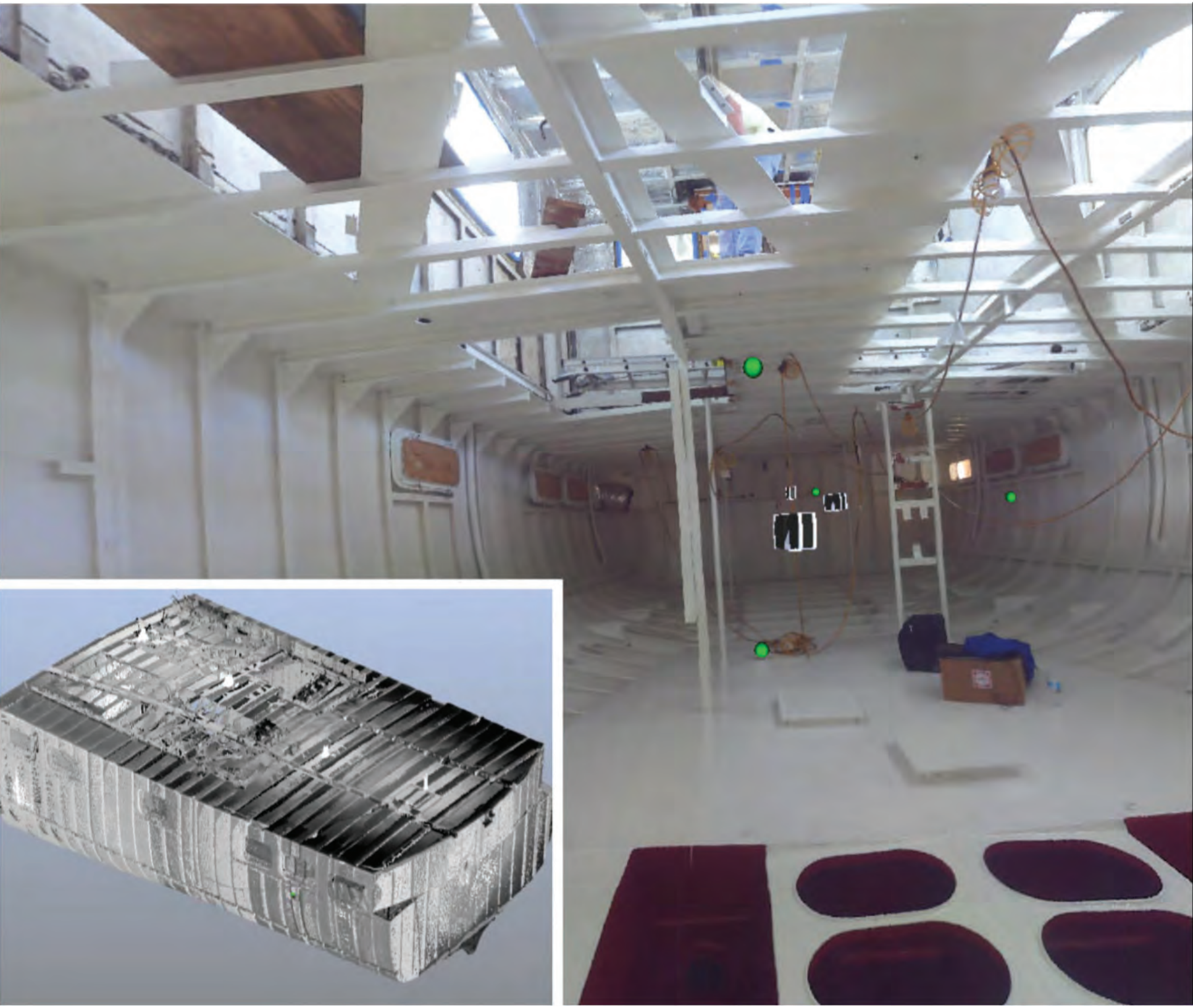
WESTHOFF INTERIORS PRIDES ITSELF IN STAYING  
AHEAD OF THE “TECHNOLOGY CURVE” TO HELP  
**REDUCE PRODUCTION COSTS.**

OUR 3D LASER SCANNER IS ACCURATE TO WITHIN 3MM  
OUT TO **120 METERS** AND SCANS IN FULL COLOR.

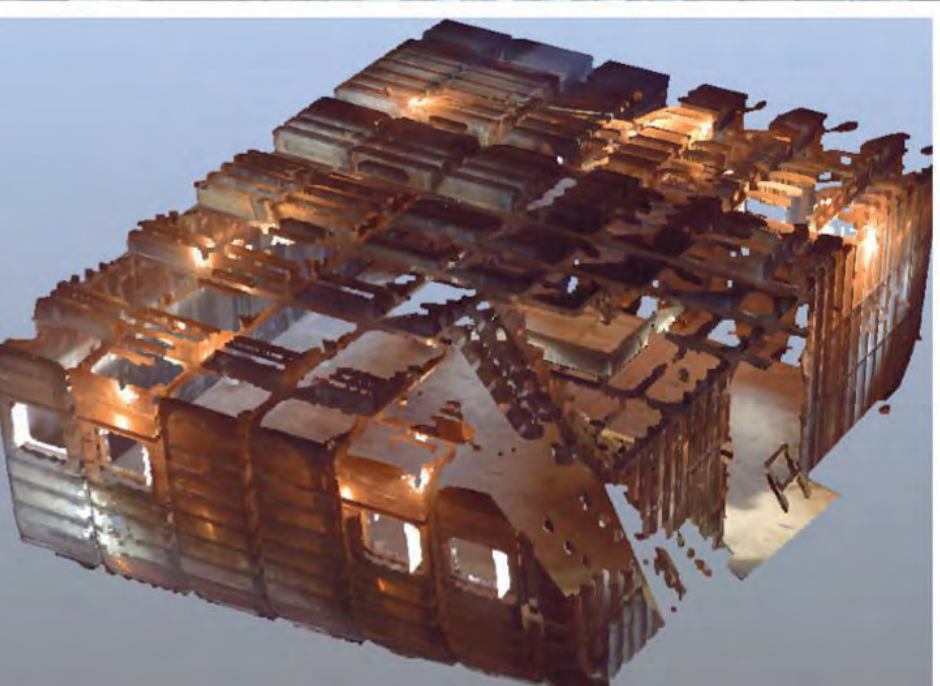
WESTHOFF’S “POINT CLOUD” SCAN CAPTURES FIELD  
MEASUREMENTS & EVERY JOBSITE ASPECT  
IN JUST **A FEW HOURS.**

OUR **PROACTIVE** APPROACH & PROBLEM-SOLVING IS  
VERY SUCCESSFUL WITH OUR CLIENTS & HELPS KEEP  
PROJECTS ON SCHEDULE.





**3D SCAN & MEASURING**







913-663-9900  
WWW.WESTHOFFINTERIORS.COM

